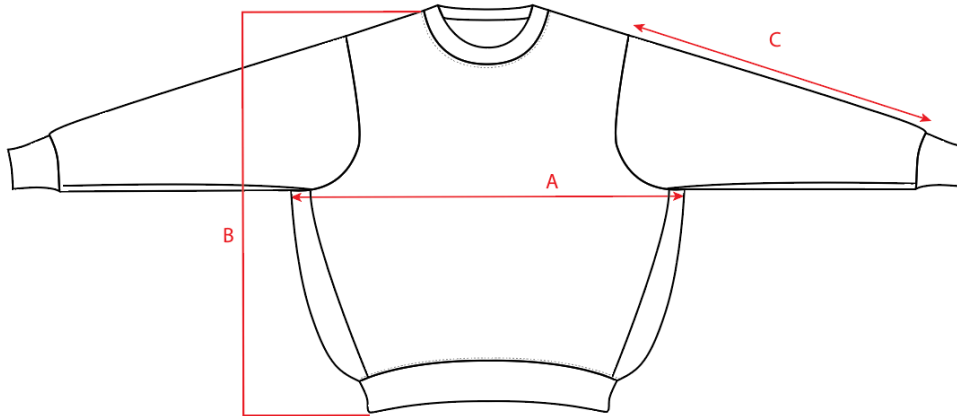


# CREW Sizing Chart



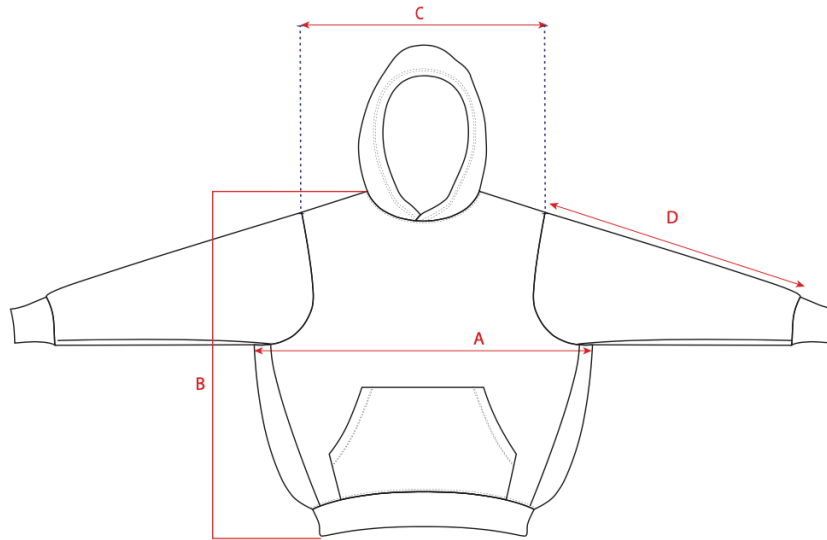
## Inches

Ref	Measurements	XS	S	M	L	XL	2X	3X	4X	5X
<b>A</b>	Front Chest: The width at the chest, measure from underarm point to underarm point across the front.	19.5	20.5	21.5	22.4	23.4	24.4	25.4	26.4	27.4
<b>B</b>	Front Length: The vertical length of the garment, starting from the highest shoulder point, to the bottom of the hem.	25.8	26.6	27.4	28.1	28.9	29.7	30.5	31.3	32.1
<b>C</b>	Sleeve length: The total length from the shoulder seam to the start of the cuff.	30.3	31.1	31.9	32.7	33.5	34.3	35	35.8	36.6

## Centimeters

Ref	Measurements	XS	S	M	L	XL	2X	3X	4X	5X
<b>A</b>	Front Chest: The width at the chest, measure from underarm point to underarm point across the front.	49.5	52	54.5	57	59.5	62	64.5	67	69.5
<b>B</b>	Front Length: The vertical length of the garment, starting from the highest shoulder point, to the bottom of the hem.	65.5	67.5	69.5	71.5	73.5	75.5	77.5	79.5	81.5
<b>C</b>	Across shoulder: The distance between the shoulder seams measured straight across the front.	77	79	81	83	85	87	89	91	93

# HOODIE Sizing Chart



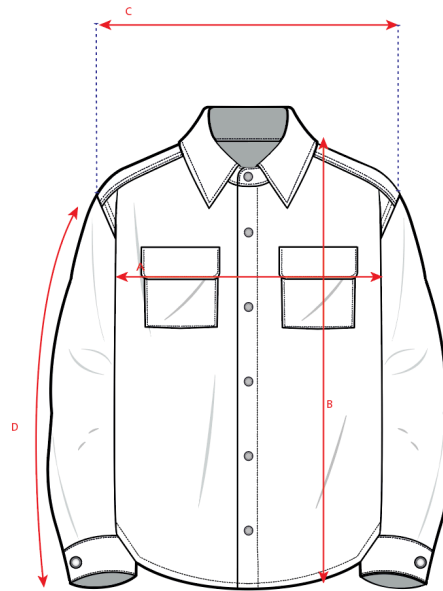
Inches

Ref	Measurements	XS	S	M	L	XL	2X	3X	4X	5X
<b>A</b>	Front Chest: The width at the chest, measure from underarm point to underarm point across the front.	20.5	21.5	22.4	23.4	24.4	25.4	27.4	27.4	28.3
<b>B</b>	Front Length: The vertical length of the garment, starting from the highest shoulder point, to the bottom of the hem.	26.4	27.2	28.0	28.7	29.5	30.3	31.9	31.9	32.7
<b>C</b>	Across shoulder: The distance between the shoulder seams measured straight across the front.	24.0	24.4	24.8	25.2	25.6	26.0	26.4	26.8	27.2
<b>D</b>	Sleeve length: The total length from the shoulder seam to the start of the cuff.	26.1	26.4	26.7	27.0	27.2	27.5	27.9	28.3	28.7

Centimeters

Ref	Measurements	XS	S	M	L	XL	2X	3X	4X	5X
<b>A</b>	Front Chest: The width at the chest, measure from underarm point to underarm point across the front.	52	54.5	57	59.5	62	64.5	67	69.5	72
<b>B</b>	Front Length: The vertical length of the garment, starting from the highest shoulder point, to the bottom of the hem.	67	69	71	73	75	77	79	81	83
<b>C</b>	Across shoulder: The distance between the shoulder seams measured straight across the front.	61	62	63	64	65	66	67	68	69
<b>D</b>	Sleeve length: The total length from the shoulder seam to the start of the cuff.	66.4	67.1	67.8	68.5	69.2	69.9	70.9	71.9	72.9

# FLANNEL Sizing Chart



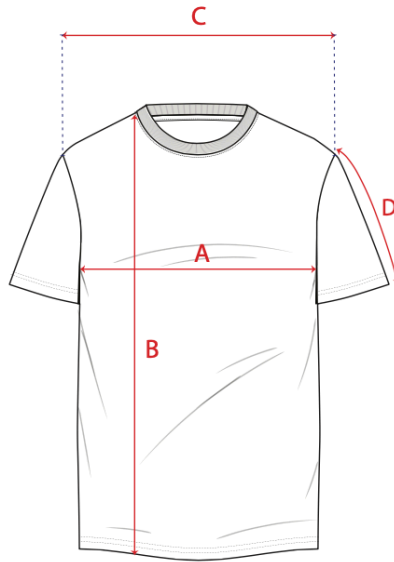
## Inches

Ref	Measurements	XS	S	M	L	XL	2X	3X	4X	5X
A	Front Chest: The width at the chest, measure from underarm point to underarm point across the front.	19.7	20.7	21.7	22.6	23.6	24.6	25.6	26.6	27.6
B	Front Length: The vertical length of the garment, starting from the highest shoulder point, to the bottom of the hem.	27.2	28	28.7	29.5	30.3	31.1	31.9	32.7	33.5
C	Across shoulder: The distance between the shoulder seams measured straight across the front.	18.7	19.3	19.8	20.4	20.9	21.5	22	22.6	23.1
D	Sleeve length: The total length from the shoulder seam to the end of the sleeve	24	24.4	24.8	25.2	25.6	26	26.4	26.8	27.2

## Centimeters

Ref	Measurements	XS	S	M	L	XL	2X	3X	4X	5X
A	Front Chest: The width at the chest, measure from underarm point to underarm point across the front.	50	52.5	55	57.5	60	62.5	65	67.5	70
B	Front Length: The vertical length of the garment, starting from the highest shoulder point, to the bottom of the hem.	69	71	73	75	77	79	81	83	85
C	Across shoulder: The distance between the shoulder seams measured straight across the front.	47.5	48.9	50.3	51.7	53.1	54.5	55.9	57.3	58.7
D	Sleeve length: The total length from the shoulder seam to the end of the sleeve	61	62	63	64	65	66	67	68	69

# TEE Sizing Chart



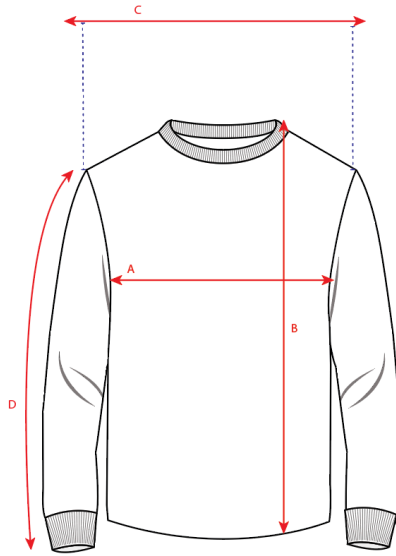
## Inches

Ref	Measurements	XS	S	M	L	XL	2X	3X	4X	5X
A	Front Chest: The width at the chest, measure from underarm point to underarm point across the front.	19.3	20.3	21.3	22.6	23.9	25.2	26.5	27.8	29.1
B	Front Length: The vertical length of the garment, starting from the highest shoulder point, to the bottom of the hem.	26.6	27.4	28.3	29.2	30.1	30.5	31.4	32.2	33.1
C	Across shoulder: The distance between the shoulder seams measured straight across the front.	19.3	19.8	20.3	20.9	21.7	22.5	23.3	24.3	25.2
D	Sleeve length: The total length from the shoulder seam to the end of the sleeve	8.4	8.7	8.9	8.9	9.2	9.4	9.8	10.2	10.6

## Centimeters

Ref	Measurements	XS	S	M	L	XL	2X	3X	4X	5X
A	Front Chest: The width at the chest, measure from underarm point to underarm point across the front.	49	51.5	54	57.3	60.6	63.9	67.2	70.5	73.8
B	Front Length: The vertical length of the garment, starting from the highest shoulder point, to the bottom of the hem.	67.5	69.7	72	74.2	76.5	77.5	79.7	81.9	84.1
C	Across shoulder: The distance between the shoulder seams measured straight across the front.	49	50.3	51.6	53.1	55.1	57.1	59.1	61.6	64.1
D	Sleeve length: The total length from the shoulder seam to the end of the sleeve	21.4	22	22.7	22.7	23.3	24	25	26	27

# LONG SLEEVE TEE sizing Chart



## Inches

Ref	Measurements	XS	S	M	L	XL	2X	3X	4X	5X
<b>A</b>	Front Chest: The width at the chest, measure from underarm point to underarm point across the front.	19.3	20.3	21.3	22.6	23.9	25.2	26.5	27.8	29.1
<b>B</b>	Front Length: The vertical length of the garment, starting from the highest shoulder point, to the bottom of the hem.	26.6	27.4	28.3	29.2	30.1	30.5	31.4	32.2	33.1
<b>C</b>	Across shoulder: The distance between the shoulder seams measured straight across the front.	19.3	19.8	20.3	20.9	21.7	22.5	23.3	24.3	25.2
<b>D</b>	Sleeve length: The total length from the shoulder seam to the end of the sleeve	24.8	25.1	25.4	25.4	25.6	25.9	26.3	26.7	27.1

## Centimeters

Ref	Measurements	XS	S	M	L	XL	2X	3X	4X	5X
<b>A</b>	Front Chest: The width at the chest, measure from underarm point to underarm point across the front.	49	51.5	54	57.3	60.6	63.9	67.2	70.5	73.8
<b>B</b>	Front Length: The vertical length of the garment, starting from the highest shoulder point, to the bottom of the hem.	67.5	69.7	72	74.2	76.5	77.5	79.7	81.9	84.1
<b>C</b>	Across shoulder: The distance between the shoulder seams measured straight across the front.	49	50.3	51.6	53.1	55.1	57.1	59.1	61.6	64.1
<b>D</b>	Sleeve length: The total length from the shoulder seam to the end of the sleeve	63	63.7	64.4	64.4	65.1	65.8	66.8	67.8	68.8